

Global Education Derby (GED)

AGM December 2022

About us

Who are we?



Global Education Derby (GED) is not for profit organisation that is a registered charity based in Derby established in 1991.

As a Development Education Centre (DEC) we are an independent, affiliated member of the Consortium of Development Education Centres (CoDEC) www.codec.org.uk/.

We support schools and communities, locally and internationally, to nurture values and critical thinking skills needed to promote personal, local and global change. We have over 30 years of experience collaborating with organisations, teachers, youth workers and community educators to make sense of a complex and rapidly changing world.

We are passionate about providing innovative opportunities to engage with the big issues we find in our world today. How can we make the world a better place for everyone? How and where do we start?



Our Vision:
Learning for a Better World



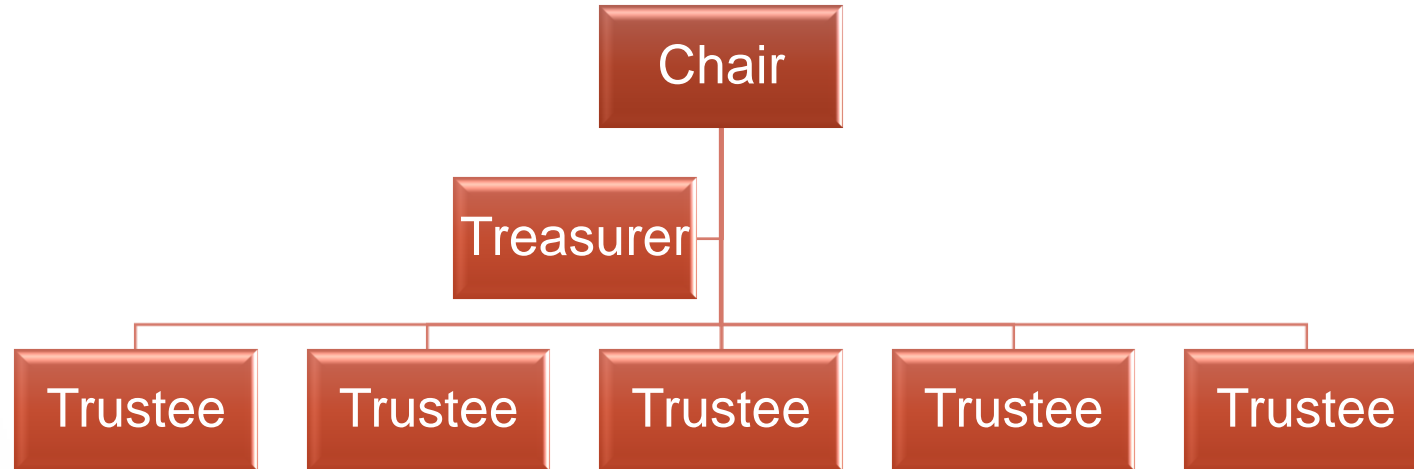
Our Approach:
Connect
Challenge
Change



Our Mission:
To bring about personal, local
and global change for a fairer,
greener, more sustainable world

The current volunteer Board of Trustees is well established with members offering a diverse mix of background, skills and expertise to the benefit of the organisation.

The Trustees have oversight of all the activities that are conducted by the charity and meet regularly with the team.



Our Board of Trustees

Yvonne Luce
Education Programme Manager

Rubi Mahmood
Education Coordinator

David Taylor
Finance & Funding Manager

Lisa Sabey
Administrator

Our Team

Where we work



Current Projects

2022/2023

We run a range of projects providing opportunities for teachers, youth workers and young people to get actively involved in exploring all aspects of global citizenship.

Our projects offer easy ways in to explore big topics like inequality and conflict and build core skills such as critical thinking, creativity, communication and student leadership.



Projects Overview

Local Projects

Derby Intergenerational Linking Project

- This Care Home Friends and Neighbours (CHFANs) project brings together young people and older people to co-create activities which benefit both old and young.
- We are local brokers for Care Home Friends and Neighbours project bringing together young people and older people in a mutually beneficial way, sharing experience and spreading a little joy!
- An innovative national programme coordinated by My Home Life and The Linking Network. Funded by Dunhill Medical Trust.
- This project links schools and youth groups with residential care homes. We work collaboratively with 10 care homes, 10 schools and 1 youth group to bring new opportunities for friendship and understanding to develop across the generations.

The Year 1 children put on a production of 'The Great Fire of London'. We went back to Elvaston Lodge to perform some of the songs and a fire dance.



We have volunteers for our Advisory Group - a wonderful mixture of expertise and experience, youth and energy!

"I had the privilege of visiting Liversage Court [care home that the school are linked with] with our Year 11 students this week and it was an incredibly moving experience.

Under Alison's guidance [the class teacher] our students have formed some lovely friendships with the residents, as well as practising their communication skills and sharing activities, showing great empathy. They are also learning new things from talking to the residents, so it is mutually beneficial for everyone concerned. We will be keeping these visits going in the future."

**Comment from Sue Turner
Assistant Head at St
Andrews Academy
(Special School - Derby)**

Local Projects

Derby/Derbyshire Schools Linking Programme

Part of a national initiative linking school classes together to explore identity, diversity, equality and community together. Supporting primary children in Derby/Derbyshire to develop skills of enquiry, critical thinking, reflection and communication, with real life interaction for children to meet, build new relationships, work together and take social action within their community.



The programme is led by The Linking Network (TLN) and offers a positive, age-appropriate curriculum contribution to spiritual, moral, social and cultural development of pupils, addressing Fundamental British Values and the Prevent Duty. Funded by Pears Foundation, Department for Levelling Up, Housing & Communities, Department for Education and Dulverton Trust.



Matching schools and delivering training for our linking programme coordinators and planning for partnered classes to meet at Pride Park Stadium



Walton C of E Primary
@walton_primary

Thank you [@Global_Ed_Derby](#) for a fantastic day yesterday. Year 3 had a wonderful day making new friends with children from [@ChellastonFSA](#) and having a tour around Pride Park!
[@JohnTaylorMAT](#)



Meadow Farm Community Pri... 19h
Pupils in Y4 had an absolutely fabulous day. Thank you for hosting such an exciting event for our school. Pupils were so engaged and enthusiastic to meet their partner school [@ipa_spencer](#) We hope to see you again. [#schoolslinking](#) [#Derby](#) [#collaboration](#)

GlobalEducationDerby @Global_Ed...
Today, we are looking forward to meeting staff and students from [@ipa_spencer](#) and [@meadowfarmsch](#). They are meeting up for the first time on their linking year at [#PridePark](#). We have some fun activities for you all!
[#Derby](#) [#SchoolsLinking](#)



3 8

Miss Wright @MissWrighttt 22h
An absolutely brilliant day at Pride Park, meeting up with our school linking class 😊 Lots of team building activities and talking about the things we have in common and what makes us unique! We even got a tour of the stadium! 📸 [@ipa_spencer](#) [@satrust_](#) [@Linking_Network](#)



2 4 15

Miss Wright
@MissWrighttt

Thank you [@Global_Ed_Derby](#) for a fantastic day!

School Linking - Feedback



Meadow Farm Community Pri... 5d

It is such a privilege to be part of these two projects

[@Global_Ed_Derby](#) Long may it continue!

GlobalEducationDerby [@Global_Ed...](#)

This is amazing :)

[@meadowfarmsch](#) are also part of our [#SchoolsLinking](#) and [#IntergenerationalLinking](#) projects.

All wonderful ways to enrich young (and older!) lives and learn to communicate and get along - living well together. Well done!

twitter.com/meadowfarmsch/...

twitter.com/Global_Ed_Derby/status/1...

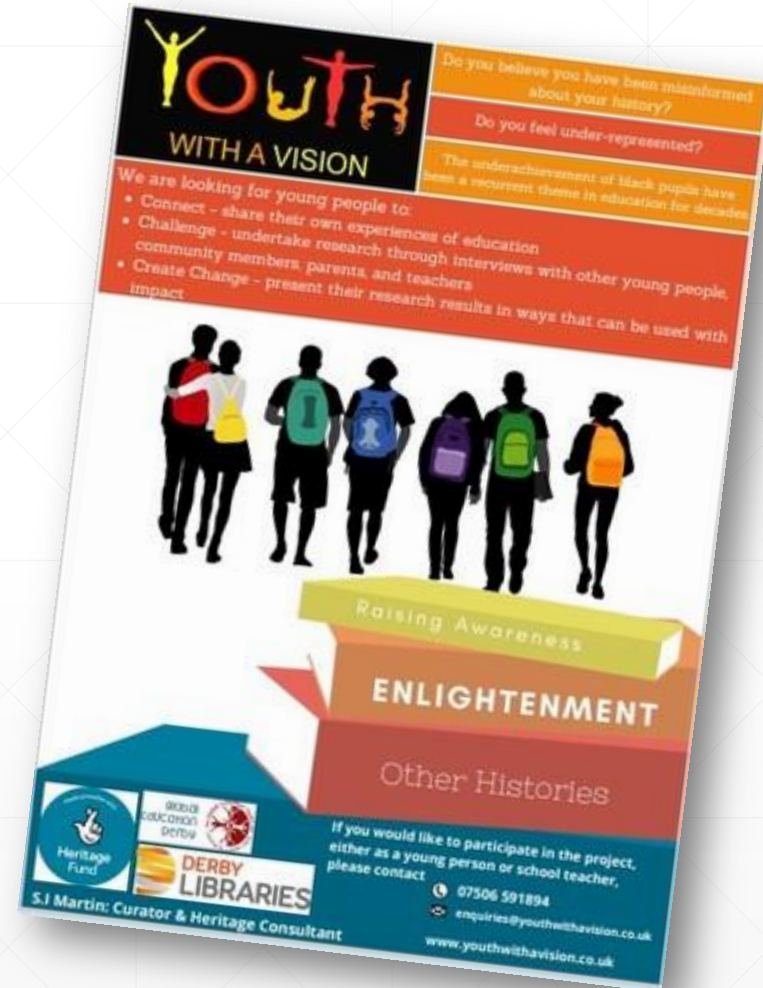


School Linking & Intergenerational – Comment

Local Projects

"Other Histories: Education as if Black Lives Matter"

- The programme is working with local project partner **Youth With A Vision**.
- Supported by the **Lottery Heritage Fund**, the project provides opportunities for young people from black and minority ethnic communities to investigate the history of their community, and its representation or misrepresentation within the school curriculum.
- It aims to involve a wider range of people in exploring heritage, make a contribution towards the current debate on "decolonising the curriculum" and, at the same time, address the educational underachievement of black pupils.





European Projects

Talent-Ed

- Erasmus+ project funded by the European Union (EU) working with partner in England, Germany, Turkey & Slovenia
- Teaching and Learning for Enterprise Education through a global lens
- Developing face to face and online training courses for European teachers focusing on global learning through social and economic enterprise education



Working with international partner schools to create a new training course integrating global learning with entrepreneurship education in Izmir, Turkey

Completed Projects

Guided partnerships | British Council

Bringing UK and overseas teachers together through Guided Partnerships for British Council

- Connecting an international partner, and work on a joint project within a wider cluster of UK and overseas schools
- Schools in Derbyshire & Lincolnshire were connected to schools in Indonesia & Zimbabwe through a series of webinars





European Projects

Leaving No-One Behind

- Erasmus+ Project funded by the European Union (EU) working with partners in England, Germany and Slovenia
- We explored how the Sustainable Development Goals (SDGs) can improve learning and motivation for Special Educational Needs and Disability (SEND) students and those from migrant and minority backgrounds
- Training delivered and website launched with lesson/activity ideas and teacher guidance to support teaching about and for the SDGs and inclusion
- Special thanks to our European project partners (in Germany and Slovenia), Faye Chan and Micha Davis (from St Martin's School in Derby, UK).

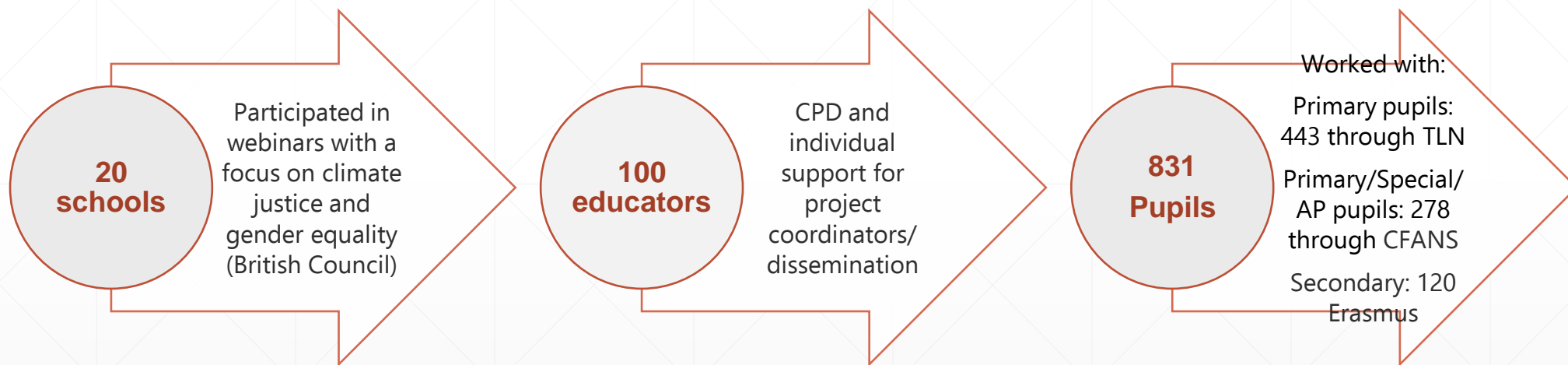
<https://www.leaving-noone-behind.org/>

global
Education
Derby



What were we doing from April 2021 - April 2022?

Through Covid-19 we continued our work



What have we been doing since April 2022?

May 2022
November 2022

Department for
International Trade
International Trade
Week 2022

December 2022

British Council –
Saudi Arabia

October 2022

YA &CYP Network
Derby

November 2022

Kids League Kenya
/Operation Orphan

Making Connections



Project: Leaving No one Behind

Ljubljana Slovenia

July 2022



Project: Talent Ed Taunton UK July 2022

Project: Talent-Ed Izmir Turkey October 2022

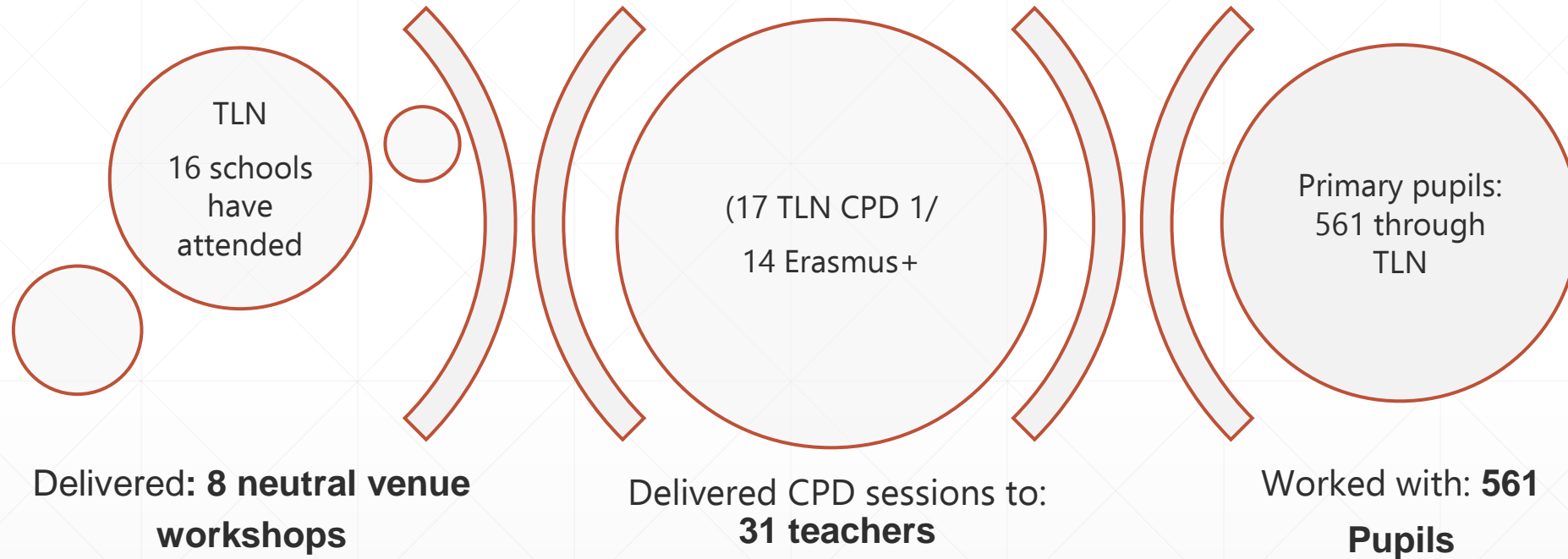


- Developing strategy for alternative revenue stream
- Updating the website
- Creating capability statement
- Publication of Newsletters
- Attending relevant events and conferences locally and nationally to raise organisation profile
- Working with DIT advisor to raise profile internationally

Marketing



Working with Teachers and Pupils



Project events

- School Linking - CPD 2 January 2023
- Talent- Ed TPM Meeting 3 - February 2023 - Estonia
- Talent- Ed TPM Meeting 4 March 2023 - Germany
- School Linking Neutral Venue - Day 9
- Intergenerational project visits - Jan - March 2023



Upcoming events

Meetings for possible future collaborations

- Our Shared World - 12th December 2022
- Kids League Kenya - 13th December 2022
- British Council Pakistan - 16th December 2022
- Derby City Council – 11th January 2023
- British Council Egypt & Jordan – January 2023
- University of Derby - January 2023



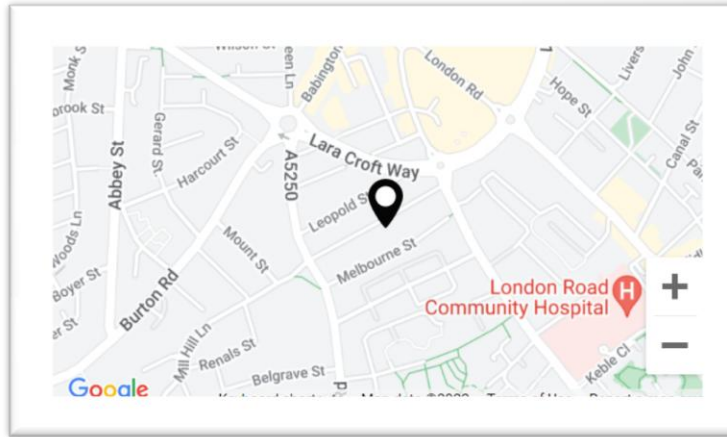
Proudly supporting
youth social action



Funding Partners

Appendices

**Global Education
Derby
1st Floor Office
32 Charnwood Street
Derby
DE1 2GU**



Location & contact details



00 44 (0)1332 298185



admin@globaleducationderby.org.uk



www.facebook.com/GlobalEducationDerby



twitter.com/Global_Ed_Derby



www.linkedin.com/company/2416317

Global Education Derby is a Registered Charity No. 1049591 and a Company Limited by Guarantee registered in England & Wales No. 2642026.

Registered office address: 1st floor, 32 Charnwood Street, Derby DE1 2GU

Click the links below to find out about our previous projects

[Thinking Otherwise](#)

[How Others Respond](#)

[Thinking Again, Thinking Critically](#)

[In Others' Shoes](#)

[Create the News](#)

[MPR - The Expression Sessions](#)

["Writing is Wrong" workshops](#)

[Other Voices](#)

[Common Goal](#)

[Opening Out](#)

[Money, Power, Respect \(MPR\)](#)

[Reppin Endz](#)

[Promoting Positive Voices](#)

[Back From The Edge](#)

[Where Many Worlds Fit](#)

[Global Learning for Community Cohesion](#)

[Green Flag for Development](#)

[Youth Interfaith Forum](#)

[Mine, Yours, Our Journey](#)

[Derbyshire Community Cohesion Project](#)



Previous Projects

Our Board of Trustees

- **Matthew Parry:** Matthew became a Trustee of GED in 2018. Matthew took on the role of Chair at the 2020 AGM and was re-elected in 2021. He is currently a Senior Lecturer on the teacher training programmes at the University of Derby, with an emphasis on Computing, Mathematics, Science and SEND
- **Fatimah-Razak:** Fatimah joined the Board of Trustees in 2011 and was elected as Treasurer. She has previously been involved in GED project work as part of the Multi Faith Centre Youth Group and has also held the position of Chair at GED, before stepping down to concentrate on other volunteer work.
- **Rob Butler:** Until December 2017, Rob was the Deputy Head of a 11-19 special school in Nottinghamshire. Rob is an experienced teacher of science (over 25 years) and now Rob is field officer for the Midlands region of the Association for Science Education and delivers CPD for STEM learning & the Science Learning Partnerships.
- **Dr Ranjit Verma:** Ranjit is an experienced volunteer who considers it a privilege to serve the community. He is a medical doctor and a former consultant anaesthetist at Royal Derby Hospital and has huge experience of committee work and has previously been academically involved with many organisations as well as the magistracy and governorship of the Derby High School. Ranjit has been a Trustee since 2016.
- **Connie Lau Man Yuen:** Connie joined the Board of Trustees at the 2020 AGM. Connie has worked as an English teacher, part-time lecturer and researcher for the past 16 years. She was awarded PhD with a special interest in learning English as a second language as well as learning content subject thorough a second language.
- **Nick Gee:** Nick joined the Board of Trustees at the 2020 AGM. He is Associate Professor (Accessibility and Inclusivity) in the Faculty of Health, Education and Life Sciences at Birmingham City University, UK. He is also founder member and Chair of the international Disability in Professional Practice Special Interest Group (DiPPSIG), and Executive Board Member and Chair Elect of the European Association of Practitioner Research on Improving Learning (EAPRIL). Nick resigned from the Board at the 2022 AGM.
- **Melanie Welaratne:** Melanie joined the GED membership in December 2020, was co-opted onto the Board early in 2021 and became a Trustee at the AGM in 2021. Melanie has experience in both Higher and Further education, currently working as an Educational Developer at Nottingham Trent University. She previously worked at both the University of Derby and Derby College in student facing roles that championed student voice.



Our Board of Trustees

Remembering Stuart Banks



Stuart and David go back some way, having first met in 1986 in Swaziland, where they were both working as volunteers with Skillshare International. Stuart stayed on in Swaziland, finally coming back to the UK about 5 years ago.

He settled in Derby - "London being just too damned expensive" - and joined the GED Board of Trustees in 2018.

With considerable experience of charity/development sector both in UK and Africa, as well as experience of Accounting, Administration and Governance issues, Stuart was a valuable member of the Board.

Sadly, Stuart passed away in May 2022 and we all miss him.

Our Board of Trustees

International Projects

Connecting Classrooms through Global Learning (CCGL)

- Teacher CPD and local advisor for the East Midlands region with the British Council

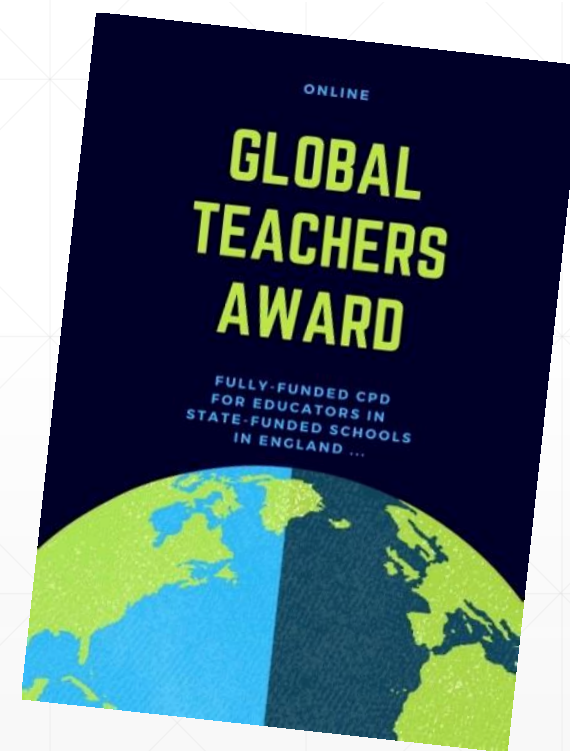


CONNECTING CLASSROOMS through Global Learning

National CPD Delivery

Global Teachers Award

- Awarded **Global Teachers Award** (GTA) contract with British Council
- Leading coordination and quality assurance of the programme delivery through partners in the Consortium of Development Education Centres (CoDEC)
- Global Teachers Award has translated into two successful live online courses at intermediate (GTA level 1) and advanced (GTA level 2) delivered across England.
- 250 teachers attended 25 courses between June 2020 and April 2021 delivered by 11 training providers.
- Over 3.5 years - 90 courses delivered across England with 883 participants.



European Projects

Thinking Otherwise

- Erasmus+ Project funded by the European Union in partnership with teachers in Estonia, Germany, Slovenia and Turkey.
- Focus on critical thinking and student leadership
- Free-to use resources available, as a project outcome

